

Operation

Monitor Operation

- * Each Flow sensor will have a difference limit showing in litres (gallons)
If the flow litres (gallons) is over the max, the flow display will be changed to "OVER"

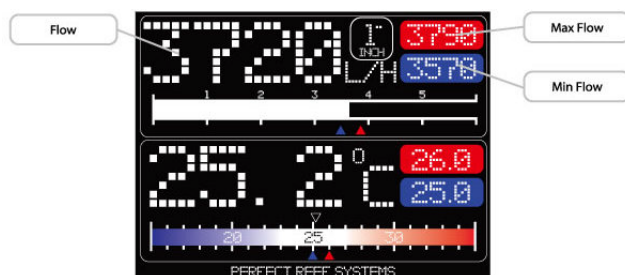
1/2"	---- Limited 1,800 L/h (475 G/h)
3/4"	---- Limited 3,600 L/h (951 G/h)
1"	---- Limited 6,000 L/h (1,584 G/h)
1.25"	---- Limited 7,200 L/h (1,900 G/h)
1.5"	---- Limited 9,000 L/h (2,375 G/h)
2"	---- Limited 12,000 L/h (3,170 G/h)

(3.78533 Litre = 1 Gallon)



Flow History Chart

- * Δ This Flow line shows the Min litres (gallons) per hour recorded and Δ is the Max flow recorded litres(gallons) per hour since the last Reset
- * The indications position will update automatically when this is a new record. The Max and the Min record will be shown on the Max and Min display

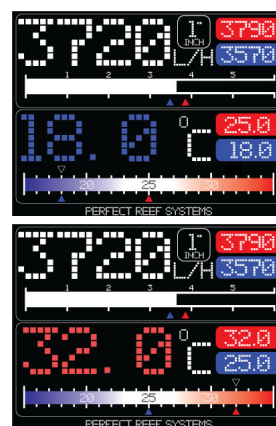


Temperature Alert Function

- * Temperature colour will be shown Δ and Δ with same colour on the temperature line
- * Each Flow sensor has a Min display temperature if below 0°C or 32°F a message of "BELOW FREEZING" will appear and "< 0.0" or "< 32" will be shown on the Min temperature display
- * Each Flow sensor has a Max display temperature. if the temperature is above 35.1°C or 95.1°F a message of "HIGH TEMP" will appear 99.9°C or 211°F will be shown as a message on the Max temperature display



$$(1.8 \times ^\circ\text{C} + 32 = 1^\circ\text{F})$$



Temperature History Chart

- * Δ is Min temperature (°C or °F) and Δ is Max temperature recorded (°C or °F) since the time of last Reset
- * The Δ and Δ position will change automatically when this new record is made. The Max and Min record will be displayed

