

PRS DC Skimmer

UNKAI 1000 (雲海)

Instruction



雲海
UNKAI
1000



PRS.LTD

Congratulations on your purchase of a UNKAI1000 Skimmer

Please read this entire UNKAI1000 instruction manual carefully before using it

<http://www.ZE0prs.jp> (UNKAI1000 Instruction)

Package Content

Firstly confirm the parts that UNKAI1000 Skimmer you have purchased, either check that the AC/DC adapter is included. Please read this entire UNKAI1000 instruction manual carefully before using it

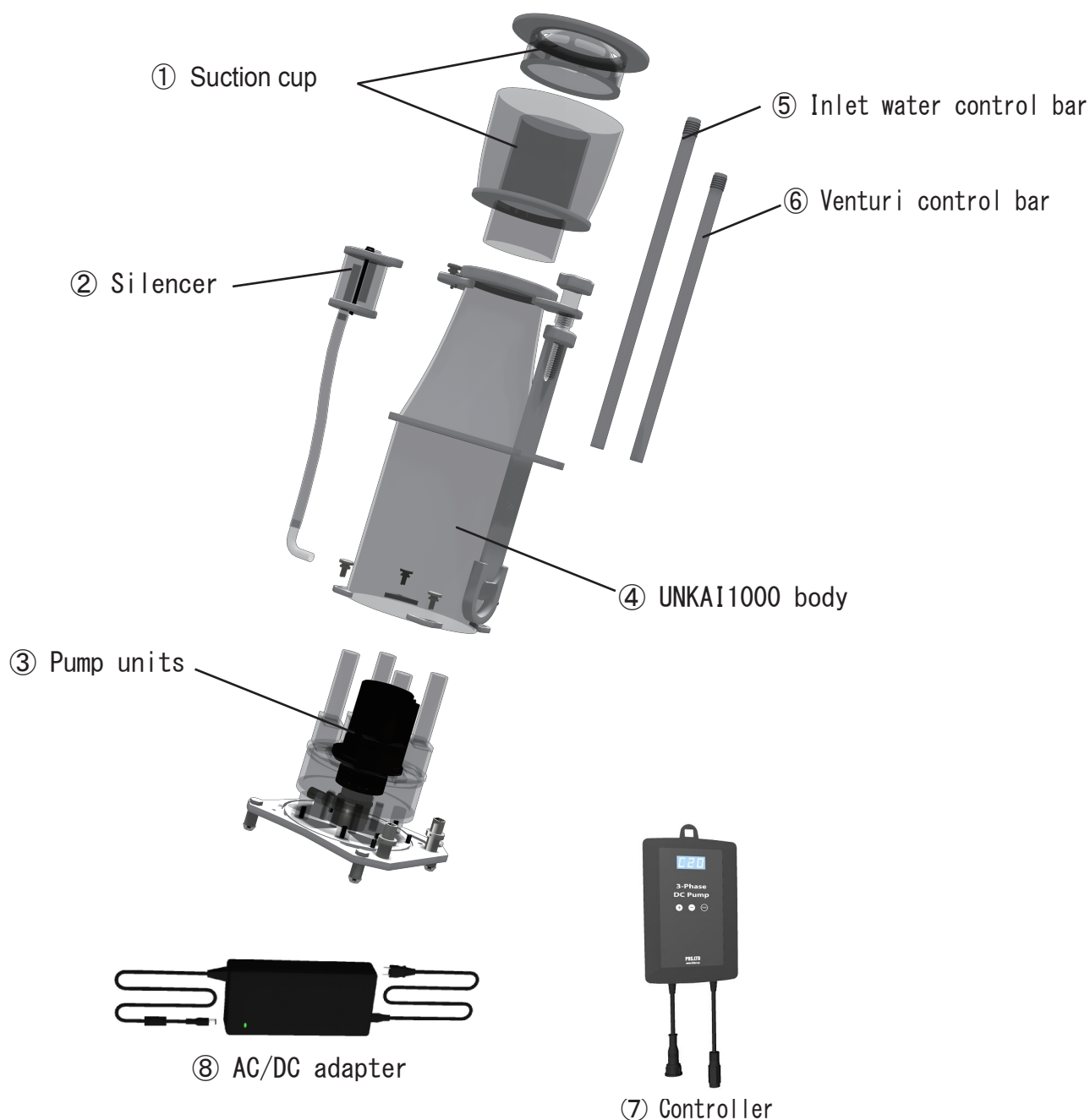


fig-1 UNKAI1000 Skimmer

Precautions

Take special care to follow the safety instructions listed below . Please keep these instructions for future reference

Before Using

- * Remove any plastic and sponges and please check there is no damage to the UNKAI1000 Skimmer body, inside tube, Pump and AC/DC adapter and Controller
- * Please ensure Controller and DC socket are easily damaged by water

Safety

- * If there is smoke or bad smell coming from Pump and AC/DC adapter, remove the plug from the socket immediately
- * The power supply cord and Pump cord should be placed where they are not in danger of being stepped on or crushed
- * Never take hold of the plug or cord with wet hands. always grasp the plug body when connecting or disconnecting
- * This UNKAI1000 Skimmer is exclusively for use with aquarium systems. Please do not use for any other systems
- * For safety purposes, do not modify or polarize the Pump and Controller and AC/DC adapter
- * Please ensure that you keep the AC/DC adapter plug clean
- * Only use the plug that is supplied with the Pump

Warning

- * **PRS WILL NOT BE LIABLE for damage to aquariums, any water damage to areas surrounding the aquarium or any other consequential damages resulting from use of This UNKAI1000 Skimmer MAKE WAVES AT YOUR OWN RISK . Please see additional warnings on page 5**

User Memo :

Date of purchase : _____

Dealer name : _____

Dealer address : _____

Dealer website : _____

Dealer e-mail : _____

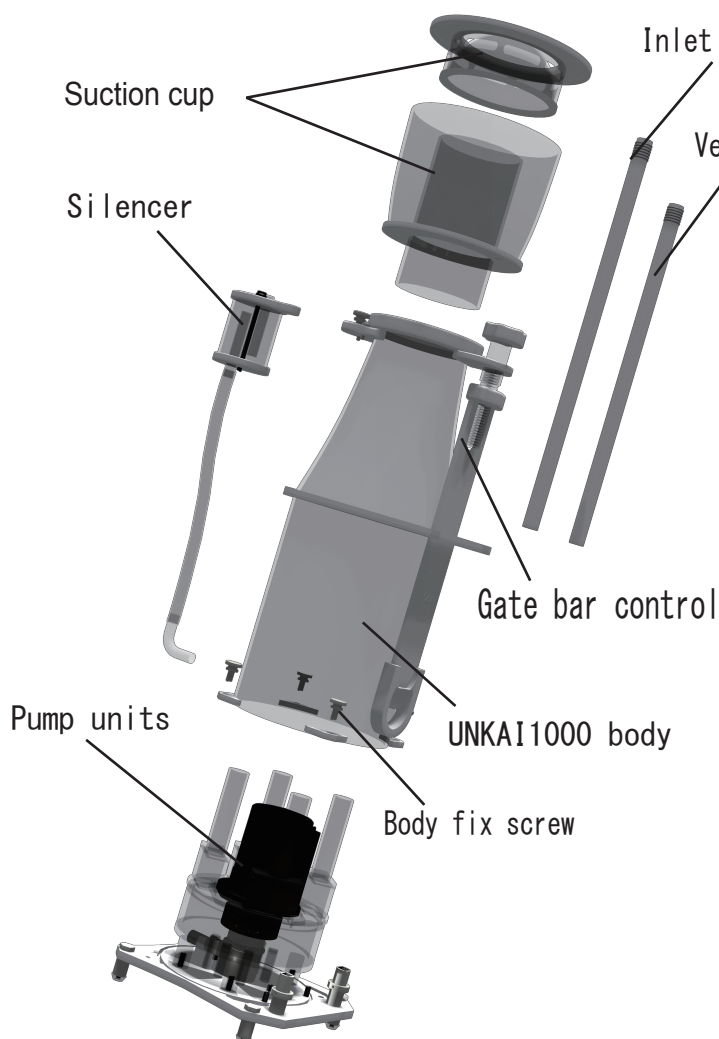
Dealer phone no : _____

Contact us : 81-4-2951-6603 prs@ZE0prs.jp

Installation

Please confirm that you have all of the parts before connecting AC/DC adapter and Pump

UNKAI1000 SKimmer installation



1. Please fix Body and Pump Units with Body fix screw on that moment, Please handle the pump cors gently. Never pull strongly
2. Please set Silencer on body neck
3. Please set Inlet water control bar and Venturi control bar (No need care each side)
4. Please set Suction cup on body
5. Please introduce Skimmer into the sump
6. Please insert AC/DC adapter pin plug into DC pump and Controller.
7. AC/DC adapter insert to plug
8. Please set Controller level around C10 first. Then please controle till become stable babble with pump level and 2 kinds of bar and gate bar

fig-2 UNKAI1000 Skimmer installation

1. Controller level (C01 ~ C20)
2. Inlet water control bar (OPEN become strong)
3. Venturi control bar (OPEN become strong)
4. Gate bar

Mesh Needle Maintenance

※ UNKAI1000 Skimmer is using Mesh Needle. So there are possibility some obstacle clogged inside Mesh needle. Please check babble condition sometimes . Then, if babble condition will be changed, Possibility there are some obstacle inside Mesh needle, please wash with soft material tool.

- Refernce -

For small obstacle --- like tweezers or soft needle

Moss --- Thin Chlorine water

Ca/Mg ---Thin Acid water

Attention : Never touch Needle when you will take out from the pump

Inlet Water Control Venturi Control

Inlet Water Control

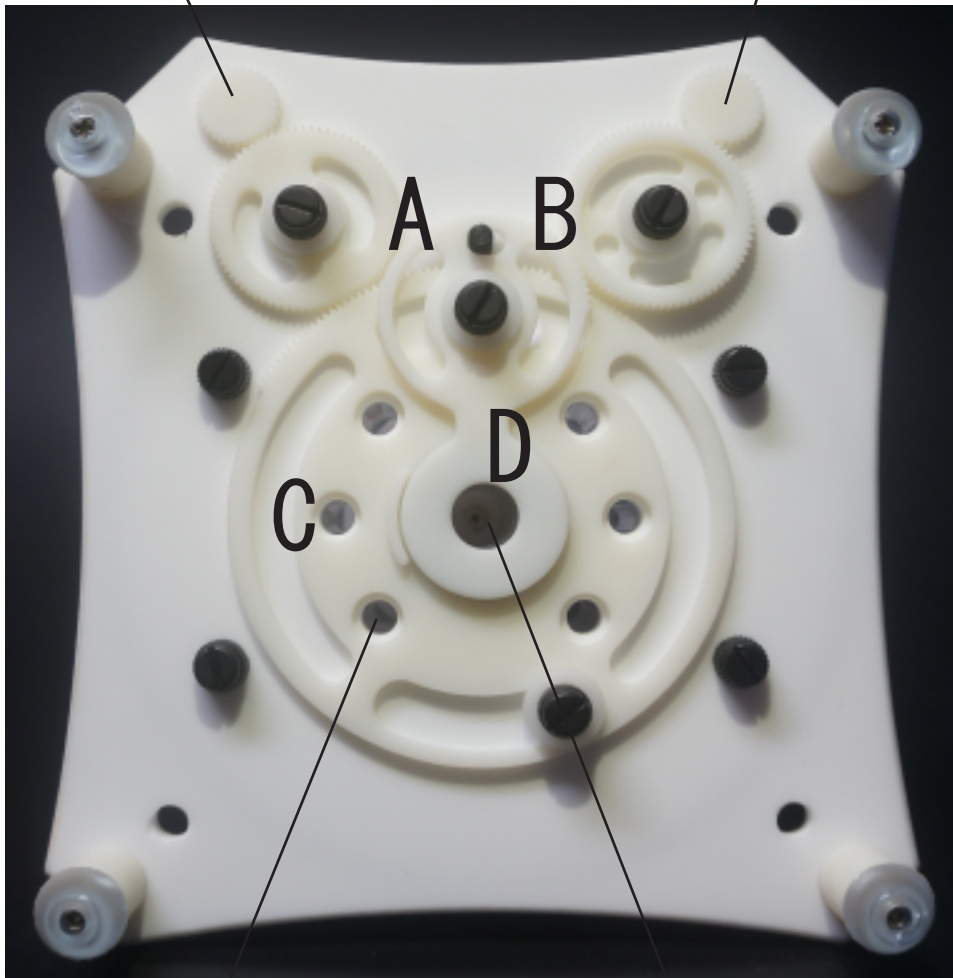
※ Inlet water hole will open and close by A and C Gear as you will turn Inlet water control bar. Accordingly You can find stable balance Air and Water

Venturi Control

※ Venturi hole will open and close by B and D Gear as you will turn Venturi control bar. Accordingly You can find stable balance Air and Water

Inlet Water Control

Venturi Control



Inlet Water hole

Venturi hole

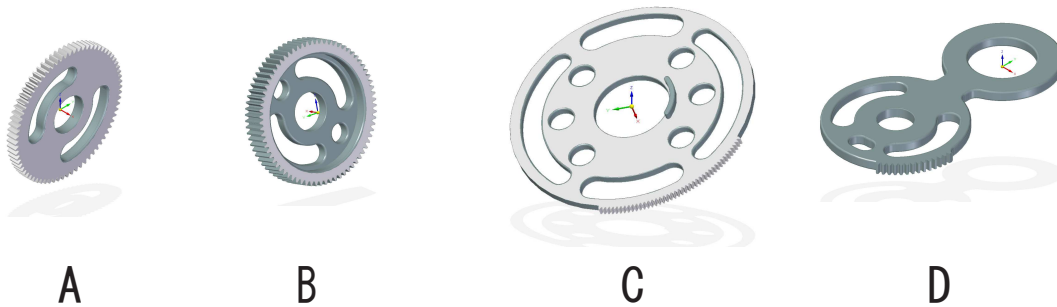


fig-3 UNKAI1000 Skimmer Gear

UNKAI1000 Skimmer Structure

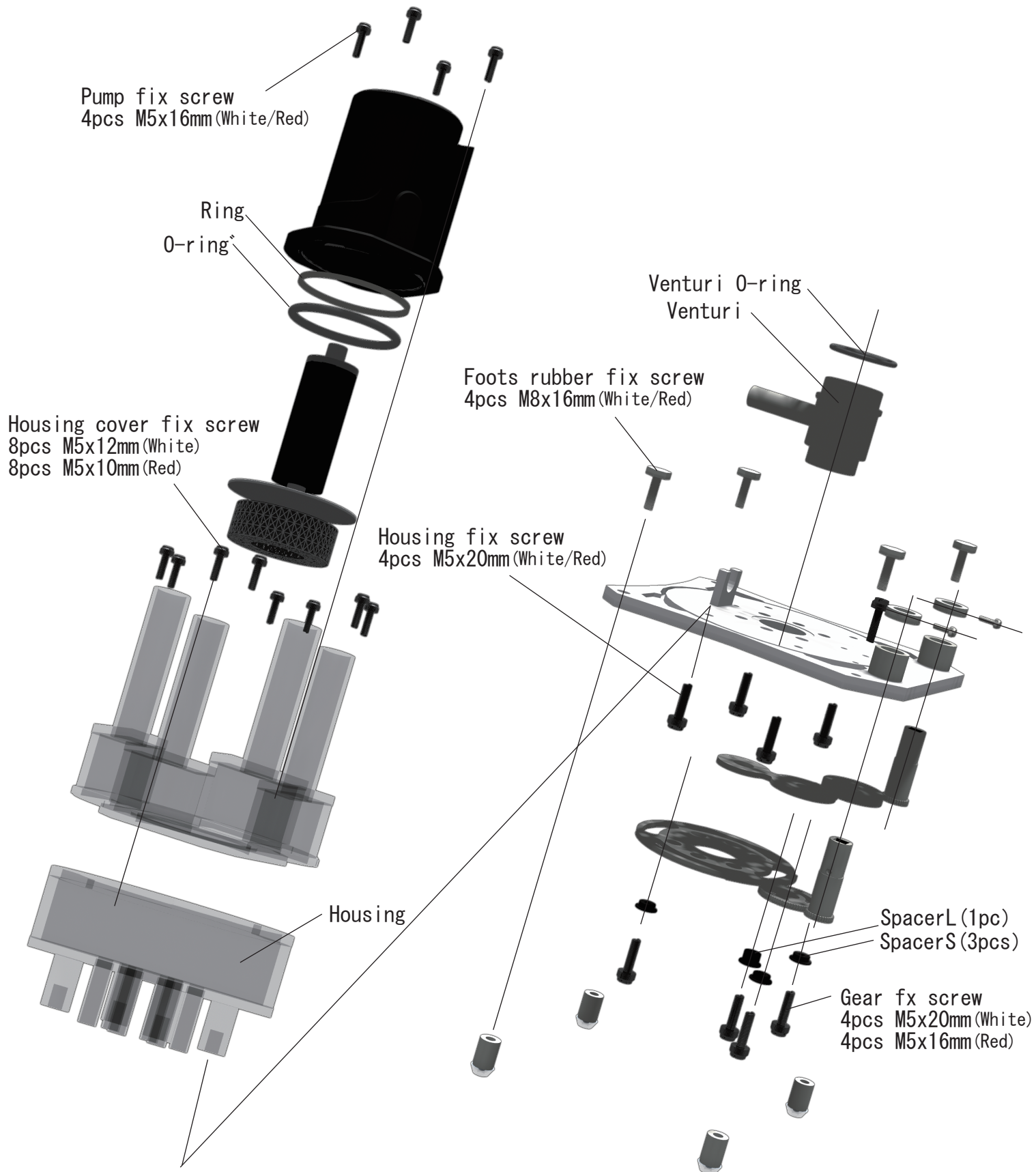


fig-4 UNKAI1000 Skimmer Structure

Description

list-1 Skimmer UNKAI 1000

Model	Skimmer UNKAI 1000
Power Input (V)	AC100V (50/60Hz)
Output (V)	DC24V
AC/DC Adapter current (A)	4
Max Power consumption (W)	50
Recommend Max pump flow (L/h)	900 ~ 1500
Recommend Water Volume (L)	350 (Max Volume 2000) ※ Please check HP Skimmerreference

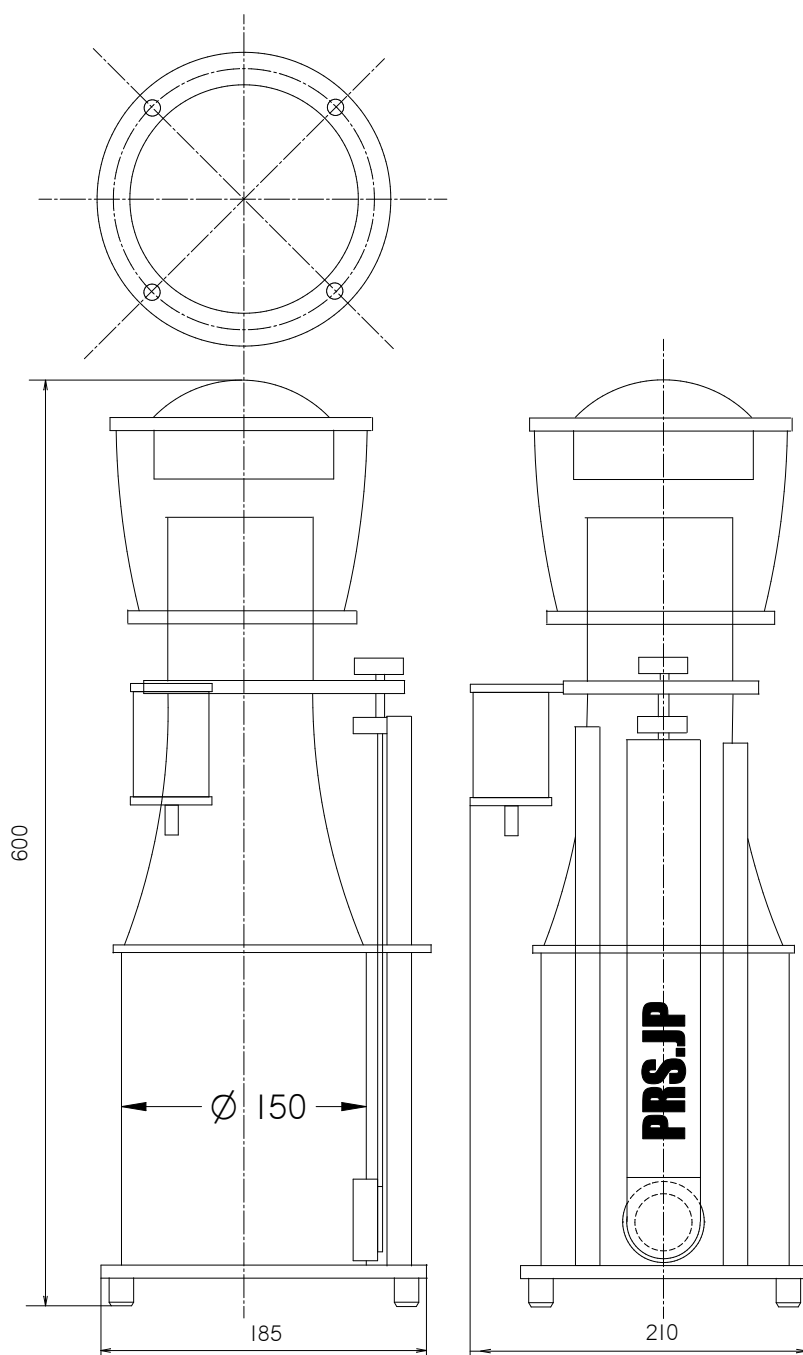


fig-5 UNKAI1000

Limited Warranty

PRS.LTD Japan warrants to original purchaser that this product is free from defects in materials and workmanship for the period of one year from the date of purchase . This warranty does not apply to damage due directly or indirectly to misuse such as the product falling in the water, negligence or accidents, repair or alterations not carried out by us or due to lack of recommended maintenance. If a defect exists during the warranty period please return the product to us where free technical repair support will be provided.

Shipping cost should be paid by purchaser so please contact us with your details prior to shipping and ensure that you have the courier details too.

PRS.LTD Japan makes no warranty or representation either expressed or implied with respect to the products quality , performance , merchantability or fitness for a particular purpose . As a result this product is sold "AS IS " and you, the purchaser assume the entire risk as to its quality and performance.

The warranty disclaimer and remedies set forth above are exclusive and replace all others oral or written expressed or implied. At no time will any PRS.LTD dealers , agents or employees be authorized to make any modifications , extension or addition to this warranty.

Some states do not allow the exclusion or limitation of implied warranties or liability for incidental or consequential damages , so the above limitation or exclusion may not apply to you.