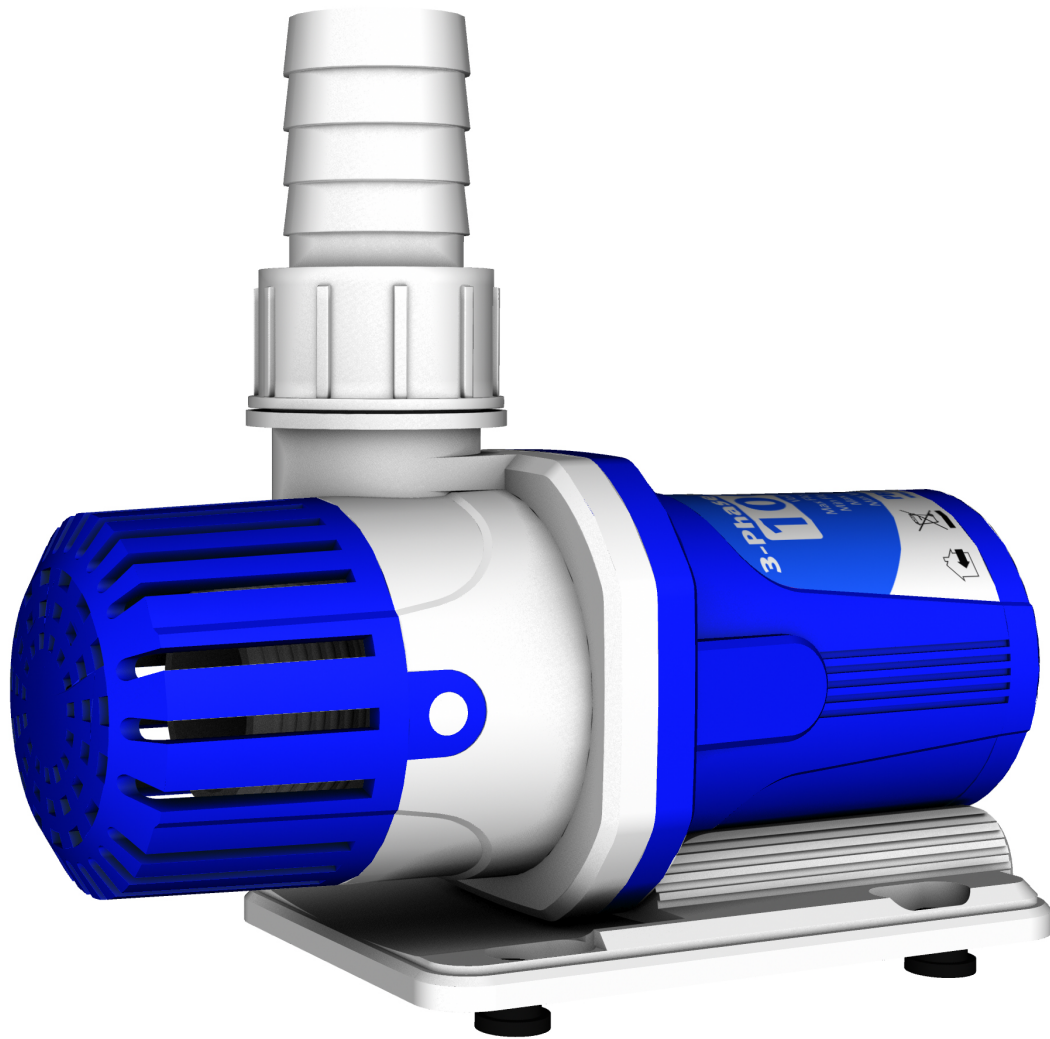


# PRS 3-Phase DC Underwater Pump

Low Noise Controller

DC1500/DC4000/DC5000/DC6500/DC10000

## Instruction



PRS.LTD

# Congratulations on your purchase of a DC Underwater Pump

Please read this entire DC Underwater Pump instruction manual carefully before using it

<http://www.ZE0prs.jp> ( DC Underwater Pump Instruction )

## Package Content

Firstly confirm which DC Pump you have purchased, either correct Controller and check that the AC/DC adapter is included

- |                                    |                      |
|------------------------------------|----------------------|
| ①. Pump Body                       | ⑦. Pump O-ring(1 pc) |
| ②. Pump Base                       | ⑧. Inside Propeller  |
| ③. Vibration-proof rubber feet     | ⑨. Pump Head         |
| ④. Outlet hose unit(each 1 pc S/L) | ⑩. Pump strainer     |
| ⑤. Hose unit cap(1 pc)             | ⑪. Controller        |
| ⑥. Hose union O-ring(2 pc)         | ⑫. AC/DC Adapter     |

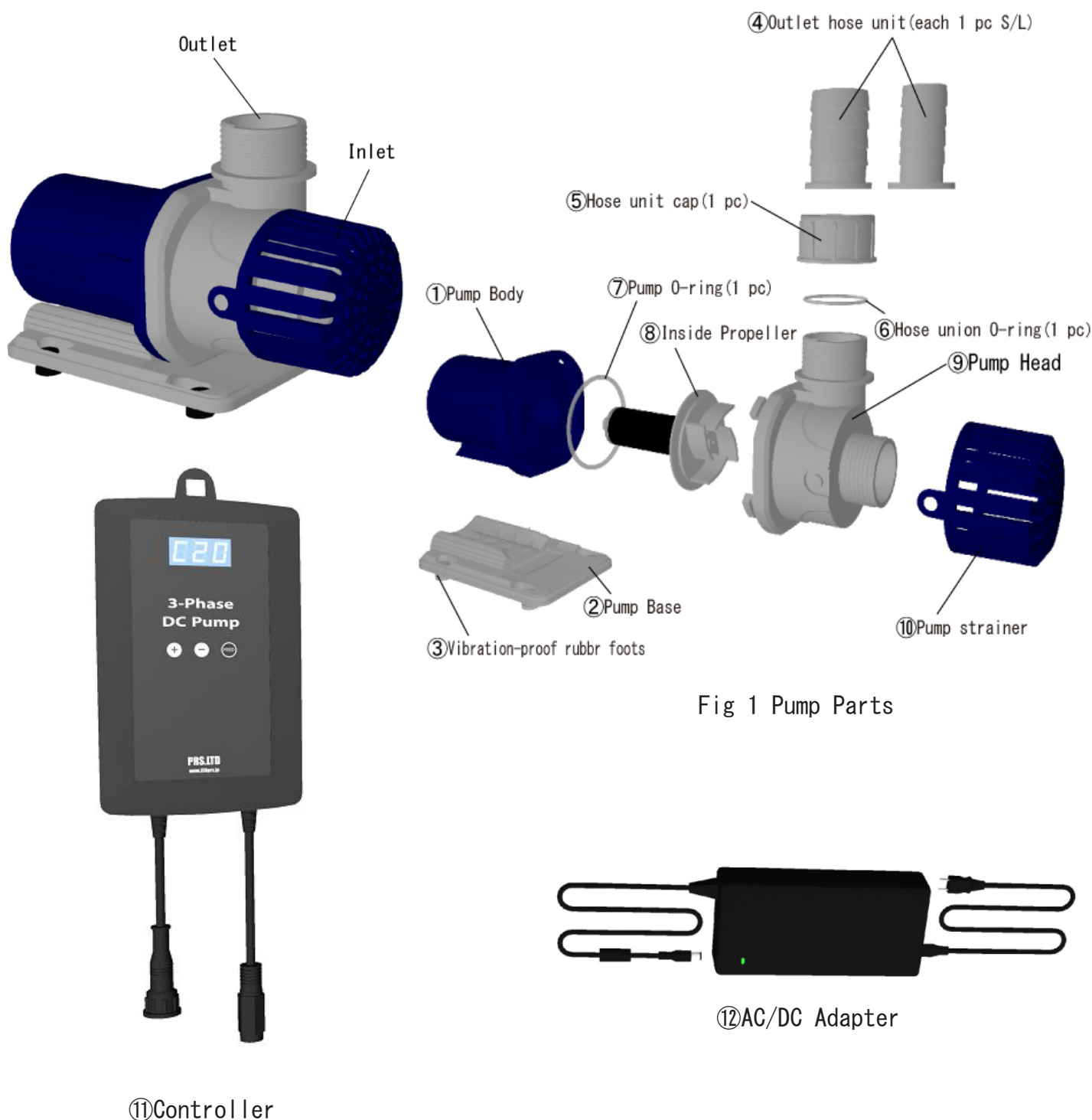


Fig 1 Pump Parts

# Precautions

Take special care to follow the safety instructions listed below . Please keep these instructions for future reference

## Before Using

- \* Remove any plastic and sponges and please check there is no damage to the pump and controller and AC/DC adapter
- \* Please ensure that the controller does not come into contact with any water and DC socket are easily damaged by water

## Safety

- \* If there is smoke or bad smell coming from Pump and controller or AC/DC adapter, remove the plug from the socket immediately
- \* The power supply cord and Pump cord should be placed where they are not in danger of being stepped on or crushed
- \* Never take hold of the plug or cord with wet hands. always grasp the plug body when connecting or disconnecting
- \* This DC Underwater Pump is exclusively for use with aquarium systems. Please do not use for any other systems
- \* For safety purposes, do not modify or polarize the controller and Pump
- \* Please ensure that you keep the AC/DC adapter clean
- \* Only use the plug that is supplied with the DC Underwater Pump controller

## Warning

- \* **PRS WILL NOT BE LIABLE for damage to aquariums, any water damage to areas surrounding the aquarium or any other consequential damages resulting from use of This DC underwater pump MAKE WAVES AT YOUR OWN RISK . Please see additional warnings on page 5**

User Memo :

Date of purchase : \_\_\_\_\_

Dealer name : \_\_\_\_\_

Dealer address : \_\_\_\_\_

Dealer website : \_\_\_\_\_

Dealer e-mail : \_\_\_\_\_

Dealer phone no : \_\_\_\_\_

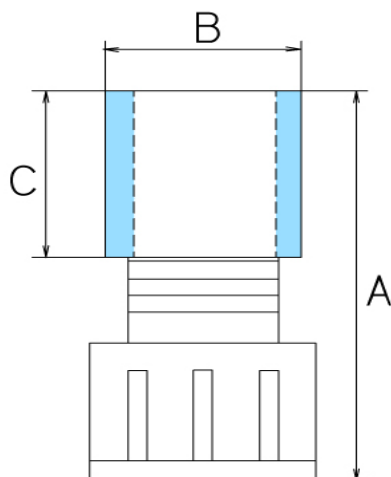
Contact us : 81-4-2951-6603 [prs@ZE0prs.jp](mailto:prs@ZE0prs.jp)

# Installation

Please confirm that you have all of the parts before connecting AC/DC adapter and Pump

## Pump

1. Please fix Vibration-proof rubber foots to Pump Base
2. Please fix Outlet hose unit(L) to outlet of Pump.if will be fixed Outlet hose unit(S),Max flow liter will be decreased  
(First of all please make sure OD size of Outlet hose unit ,and please choose right hose and if you want to use PVC piping Please choose right size of PVC piping unit from Fig-2)
3. Please set Controller and AC/DC Adapter in good ventilation place.and please connect Controller to Pump.and connect 24V pin jack of AC/DC Adapter to Controller.
4. After make sure Pump is sure inside water.Please connect Controller to plug



1500	:	A-57mm	B-18mm	(VP-13)	C-25mm
	:	A-57mm	B-22mm	(VP-16)	C-25mm
4000	:	A-68mm	B-22mm	(VP-16)	C-25mm
4500	:	A-70mm	B-26mm	(VP-20)	C-25mm
5000	:				
6500	:	A-80mm	B-26mm	(VP-20)	C-25mm
10000	:	A-80mm	B-32mm	(VP-25)	C-25mm

Fig. 2 PVC piping unit

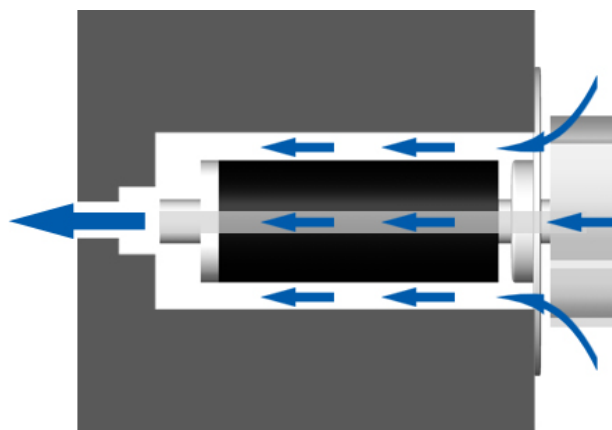


Fig. 3 Inside propeller structure

Water-cooled structural DC pump

## Controller

### Speed Control



Controller can set 20 difference speed. When the Controller is switched on, C01 will be displayed on the screen (Constant Flow Mode C01). To increase the speed of the pump press "+" (Max flow level will be displayed on the screen as C20 (Constant Flow Mode C20). To decrease the speed of the pump press "-"

### FEED Mode



If press "FEED", pump operation pause for 10 minutes. When you enter FEED Mode F10 (Feed Mode 10 minutes) and pump operation will stop. Controller will start countdown for 10 minutes. First is F10 and counting down in minutes F09 - F08 -- to F00. after 10 minutes Pump will start again on same pump power level when you pressed Feed Mode.

If you want to restart the pump before the end of 10 minutes pause press Feed Mode again then pump will restart

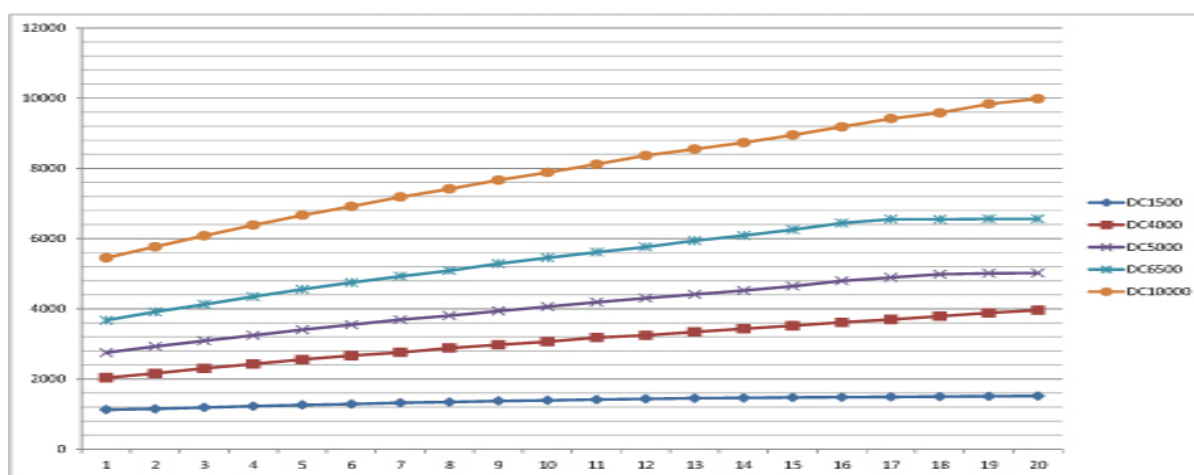


# Description

## DC Underwater Pump

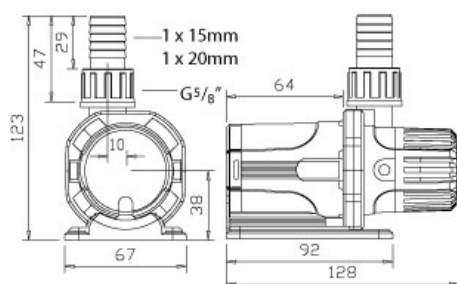
Pump	DC1500	DC4000	DC5000	DC6500	DC10000
Power Input (V)	AC100-240V (50/60Hz)				
Output (V)	DC24V				
AC/DC Adapter current (A)	2	4			6
Max Flow (L/h)	1500	4000	5000	6500	10000
Min Flow (L/h)	1100	2000	2700	3600	5400
Max Power consumption (W)	35	55	105	110	155
Head (m)	3	3	5	5	5

## DC Underwater pump Flow list

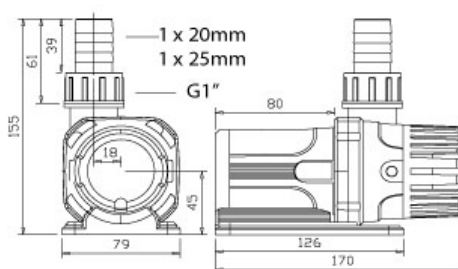


流量測定 : DC1500 CORRENTE 1"  
 DC4000/DC5000 CORRENTE 1.25"  
 DC6500 CORRENTE 1.5"  
 DC10000 CORRENTE 2"

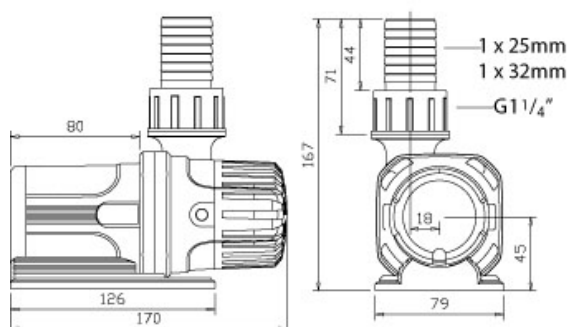
### 3-Phase DC Pump 1500



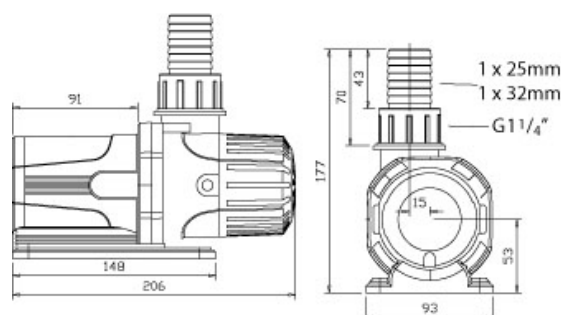
### 3-Phase DC Pump 4000/5000



### 3-Phase DC Pump 6500



### 3-Phase DC Pump10000



## DC Underwater Pump size

## Limited Warranty

PRS.LTD Japan warrants to original purchaser that this product is free from defects in materials and workmanship for the period of one year from the date of purchase . This warranty does not apply to damage due directly or indirectly to misuse such as the product falling in the water, negligence or accidents, repair or alterations not carried out by us or due to lack of recommended maintenance. If a defect exists during the warranty period please return the product to us where free technical repair support will be provided.

Shipping cost should be paid by purchaser so please contact us with your details prior to shipping and ensure that you have the courier details too.

PRS.LTD Japan makes no warranty or representation either expressed or implied with respect to the products quality , performance , merchantability or fitness for a particular purpose . As a result this product is sold "AS IS " and you, the purchaser assume the entire risk as to its quality and performance.

The warranty disclaimer and remedies set forth above are exclusive and replace all others oral or written expressed or implied. At no time will any PRS.LTD dealers , agents or employees be authorized to make any modifications , extension or addition to this warranty.

Some states do not allow the exclusion or limitation of implied warranties or liability for incidental or consequential damages , so the above limitation or exclusion may not apply to you.